

AVID symposium®

Advances in Vascular Imaging and Diagnosis

Friday - Saturday, November 16 - 17, 2018

29th Symposium & Workshops on Management and Clinical Issues



Symposium Chairs:

George L. Berdejo, BA, RVT, FSVU

Natalie A. Marks, MD, RPVI, RVT

Symposium Co-Chairmen:

Ann Marie Kupinski, PhD, RVT, FSVU

Nicos Labropoulos, BSc (Med), PhD, DIC, RVT

Laurence Needleman, MD

Frank J. Veith, MD

Honorary Chair:

Anne M. Jones, RN, BSN, RVT, RDMS, FSVU

Sponsored by



Cleveland Clinic



SOCIETY FOR VASCULAR ULTRASOUND



Hilton

www.AVIDsymposium.org

JOIN SOCIETY FOR VASCULAR ULTRASOUND NOW

ENHANCE YOUR CAREER

earn CMEs

SVU offers AMA PRA Category 1 CMEs, the highest level available. SVU offers over 40 CMEs upon joining (\$1600 value) and adds at least 18 more each year. (\$780 value)

get published

Publication in the *Journal for Vascular Ultrasound* is one of the best ways to raise your professional profile.

connect

There are over 5,700 peers to share knowledge, find answers, and develop your professional network with online and in person.

get hired

Find your next professional opportunity in our online Career Center.

EXPAND YOUR KNOWLEDGE

free journal

Journal for Vascular Ultrasound delivers original scientific articles, the latest research, profound case studies, and new techniques, to continually expand your knowledge base and technical proficiency. (\$660 value)

free webinars

Our free bi-monthly webinars cover timely issues for vascular professionals. (\$300 value)

network

Our Annual Conference and Regional Meetings offer opportunities to earn CME while interacting with top experts.

research opportunities

Be alert for announcements of our vascular ultrasound registry and research grant opportunities.

high standards

SVU sets the standards for the field. Member input is used in regular updates of Professional Performance Guidelines.

STAND OUT IN YOUR FIELD

advocacy

SVU is the united voice of our profession. Part of your member dues support lobbying Congress, government agencies, and state regulators to ensure fair treatment and sensible regulations that do not adversely impact patient care.

pass it on

SVU and the SVU Foundation provide scholarships and grants to make opportunities available to students, young professionals, and career vascular sonographers.

make your mark

Get involved! SVU has over 12 committees where you can make great connections and impact your profession, and conducts regular member surveys to glean deep insights into the field.

TECHNOLOGISTS
**JOIN
TODAY!**

Email: svuinfo@svunet.org
Visit: www.svunet.org
Call: 1-800-788- VEIN (1-800-788-8346)

SVU
SOCIETY FOR VASCULAR ULTRASOUND

The VOICE for the Vascular Ultrasound Profession since 1977

Welcome to

Advances in
Vascular
Imaging and
Diagnosis

29TH SYMPOSIUM AND WORKSHOPS
ON MANAGEMENT AND CLINICAL ISSUES

AVID symposium®
Advances in Vascular Imaging and Diagnosis

CONTENTS

Educational Grant Acknowledgment	2
Letter from Symposium Chairs	3
General Information	5
Accreditation Statement	6
Faculty Disclosure	7
CME Certificates	7 & 45
Floor Plans	9–14
Exhibits & Pavilions	15–22
Program/Agenda	23–36
Faculty Listing & Faculty Disclosure Statement	37–43
Save the Date	Back Cover

SYMPOSIUM CHAIRS

George L. Berdejo, BA, RVT, FSVU

Natalie A. Marks, MD, RPVI, RVT

SYMPOSIUM CO-CHAIRS

Ann Marie Kupinski, PhD, RVT, FSVU

Nicos Labropoulos, BSc (Med), PhD, DIC, RVT

Laurence Needleman, MD

Frank J. Veith, MD

HONORARY CHAIR

Anne M. Jones, RN, BSN, RVT, RDMS, FSVU, FSDMS

SYMPOSIUM MANAGING DIRECTOR

Jacqueline M. Simpson, BBA

SYMPOSIUM ASSOCIATE DIRECTOR

Steven J. Feld, MSW

WORKSHOP COORDINATORS

Fernando Amador, RVT

Richard Dubin, AAS-DMS, RVT, RDMS

Kelvin Portalatin, AA, RVT

CENTER FOR CONTINUING MEDICAL EDUCATION

Steven M. Kawczak, PhD

ACKNOWLEDGMENTS

Mindray North America*

Philips Healthcare*

DISCLAIMER

AVIDsymposium is owned and operated by VEITHsymposium LLC, and sponsored and accredited by The Cleveland Clinic Foundation.

The information in this educational activity is provided for general medical education purposes only and not meant to substitute for the independent medical judgment of a physician relative to diagnostic and treatment options of a specific patient's medical condition. The viewpoints expressed in this CME activity are those of the authors/faculty. They do not represent an endorsement by The Cleveland Clinic Foundation or VEITHsymposium LLC. In no event will The Cleveland Clinic Foundation or VEITHsymposium LLC be liable for any decision made or action taken in reliance upon the information provided through this CME activity.

We have made every effort to ensure that the syllabus is accurate. We cannot take responsibility for errors, deletions or omissions.

Dear Colleague,

Welcome to the 29th Annual *Advances in Vascular Imaging and Diagnosis (AVIDsymposium) Symposium and Workshops on Clinical and Management Issues* in Vascular Ultrasound! The program has been designed to allow attendees to access a broad overview of topics or delve deeply into one or two. In addition, special care has been taken to incorporate protocols and guidelines into the workshop session lectures to demonstrate how and why they should be applied in your daily practice. The Program Committee has collaborated to create an educational experience that is sure to spark the interest of all cardiovascular health professionals. Expert faculty will present novel sessions on:

Adapting guidelines into practice, lab management and career development for technologists, sonographers and physicians. In addition, you will be able to acquire valuable information on advances in technology that have increased the diagnostic capabilities of vascular ultrasound and its increasing role in the evaluation and treatment of vascular disease and the management of the vascular disease patient.

Vascular ultrasound and its role and transition to increasing numbers of specialists who are employing both traditional and newer cutting edge methods and techniques to improve patient care and management. Join us for lunch Saturday to learn about the use of social media and the Internet to ensure that we, and others, can "visualize" the value and utility of Vascular Ultrasound in the "Pearls, Perils, Pitfalls of Social Media, List Serves and the Internet" session.

Interesting case-based learning in the form of "real" clinical cases that will address both technical and interpretive challenges on Friday and Saturday, respectively.

Discussion and debate of the current clinical and philosophical controversial issues in Vascular Ultrasound including a Friday afternoon session on "Appropriate Use" of the Appropriate Use Criteria in Post Intervention Follow-Up, with a "Review of the Current Evidence."

2018 also brings with it an array of other educational opportunities at the *AVIDsymposium*. They have been organized into thematic tracks that vary not only in content, but also learning methods. In addition to the case-based learning we have planned lectures on emerging new technology and clinical applications of vascular ultrasound and special lunchtime lectures.

The *AVIDsymposium* faculty prides itself on being accessible to attendees. We do this via planned "discussion" periods for each of the sessions as well as in pre- and post-lunch Workshops Friday and Saturday that will provide excellent opportunities for "one-on-one" discussion and allow you to contribute to the conversation. Finally, we offer networking opportunities with leaders in the field, colleagues, and our partners in industry with opportunity to evaluate the most recent advances in ultrasound technology, share experiences and obtain connections.

The *AVIDsymposium* program committee is dedicated to the delivery of quality care to its patients and the education of the medical community at large. We anticipate that this will be another enjoyable and educational experience for all involved. Welcome to New York City!

Sincerely,



George L. Berdejo, BA, RVT, FSVU
Symposium Chair



Natalie A. Marks, MD, RPVI, RVT
Symposium Chair

7:00 A.M. **General Registration** – Rhinelander Gallery, 2nd Floor
Faculty Registration – Morgan Suite, 2nd Floor
Coffee – South Corridor, 2nd Floor

Plenary Sessions will be held in the Murray Hill Suites on the 2nd floor.

NEEDS ASSESSMENT

Peripheral Vascular Disease (PVD) in the U.S. affects approximately 8 million to 12 million patients a year; some experts in the field believe this may be underestimated. The disease is associated with significant cardiovascular morbidity and mortality, with a high rate of fatal and non-fatal cardiovascular events such as myocardial infarction, stroke, renal failure, limb amputations, abdominal aortic aneurysms, pulmonary embolus and progressive ischemic end-organ dysfunction.

Since atherosclerosis is the most common cause of PVD, patients with PVD have a rate of cardiovascular mortality that is 3 to 4 times higher than age-matched controls. The cardiac mortality in symptomatic PVD is estimated to be 50% at 10 years. The reduction in quality of life from global vasculopathy in many patients can thus be significant.

Prompt and accurate diagnosis of these disease processes is of utmost importance. The AVIDsymposium is designed to address this need by providing the vascular community with continuing medical education in this area. The latest pharmacologic, radiologic, surgical and endovascular techniques and technologies will be presented, along with discussions of when these treatments are justified and indicated and when they are not. Updates on clinical trials and opportunities for dialogue with experts in the field provide insight along with the latest data on the results of the various diagnostic and treatment modalities.

EDUCATIONAL OBJECTIVES

Advances in Vascular Imaging and Diagnosis 29th Symposium and Workshops on Management and Clinical Issues is an intensive two-day course designed to provide a comprehensive update on the diagnosis of vascular disease using real time B-mode imaging, color and spectral Doppler and other noninvasive techniques. The course will also address important issues in the area of Vascular Laboratory management, vascular ultrasound education, reimbursement and laboratory accreditation. An internationally renowned faculty has been assembled to provide the latest in their respective areas of expertise. This will be accomplished via didactic lectures and will be enhanced by ample time for faculty panel discussions designed to provide interaction with the audience. In addition, live scanning demonstrations and hands-on workshops will be supervised by known experts in their fields and will utilize leading edge equipment.

Following this continuing medical education activity, the participants will:

- Describe recent developments in vascular ultrasound technology
- Incorporate the Vascular Laboratory into the management of patients with vascular disease
- Identify and compare noninvasive tests that are available to aid in the diagnosis of vascular disease

GENERAL INFORMATION

- Identify current therapy and their roles for the effective management of peripheral arterial/venous disease; and carotid artery disease
- Utilize duplex ultrasound prior to, during and after endovascular procedures
- Apply issues regarding Vascular Laboratory management, reimbursement and accreditation to their practice.

TARGET AUDIENCE

This course is intended for:

- Vascular Technologists
- Sonographers
- Vascular Surgeons
- Radiologists
- Neurologists
- Vascular Nurses
- Vascular Interventionalists
- Medical and Ultrasound Students
- Other physicians and allied health professionals with an interest in the diagnosis and treatment of vascular disease.

ONLINE ACCESS TO ABSTRACTS

Presentation slides will be used as abstracts and will be available on the program page of the AVIDsymposium website at www.AVIDsymposium.org after the meeting. Abstracts will be available on the website for one full year.

ACCREDITATION STATEMENT

The Cleveland Clinic Foundation Center for Continuing Education is accredited by the Accreditation Council for Continuing Medical Education to provide continuing medical education for physicians.

The Cleveland Clinic Foundation Center for Continuing Education designates this live activity for a maximum of 17.75 *AMA PRA Category 1 Credits™*. Physicians should claim only the credit commensurate with the extent of their participation in the activity.

Participants claiming CME credit from this activity may submit the credit hours to the American Osteopathic Association for Category 2 credit.

FOR ARDMS AND CCI CREDENTIALLED VASCULAR TECHNOLOGISTS AND SONOGRAPHERS

For Vascular Technologists and Sonographers, Continuing Medical Education credit hours are available on an hour-for-hour basis and may be used to fulfill the continuing medical education requirements necessary to retain certification with the American Registry for Diagnostic Medical Sonography (ARDMS)¹ and Cardiovascular Credentialing International (CCI)² or for accreditation with the Intersocietal Accreditation Commission (IAC).

1. http://www.ardms.org/registant_resources/cme_general_information/cme_general_information
2. <http://www.cci-online.org/content/ceu-providers>

CME CERTIFICATES AND COURSE EVALUATION FORMS

CME certificates will be available online at www.AVIDsymposium.org. An e-mail with a unique password and instructions on how to obtain the certificate and complete a brief, optional course evaluation will be sent to all registered attendees after the meeting. The e-mail will be sent to the e-mail address that was used to register the attendee. **Please note that CME Certificates must be claimed by February 28, 2019.** Instructions for claiming your certificate are also available in the CME section of this course syllabus.

FACULTY DISCLOSURE

The Cleveland Clinic Foundation Center for Continuing Education has implemented a policy to comply with the current Accreditation Council for Continuing Medical Education Standards for Commercial Support requiring resolution of all faculty conflicts of interest. Faculty declaring a relevant commercial interest will be identified in this course syllabus.

ADA STATEMENT

The Cleveland Clinic Foundation Center for Continuing Education complies with the legal requirements of the Americans with Disability Act. If any participant of the AVIDsymposium requires special assistance, please advise a staff member in the registration area in the Rhinelander Gallery on the 2nd floor.

WORKSHOP SESSIONS

Please see Sessions 3, 14 and 16 for details.

FOOD SERVICE

Coffee, lunch and refreshments breaks will be served in the South Corridor on the 2nd Floor on Friday and Saturday.

GENERAL INFORMATION

EXHIBITS/PAVILIONS

Exhibitors will display their products in the South Corridor on the 2nd floor, on the 2nd floor Promenade, in the 3rd floor Foyer and Promenade, and in other designated areas.

NAME BADGES

For the convenience of our exhibitors and attendees, the bar code on your name badge includes your name, address, telephone and fax numbers, and e-mail address. Exhibitors can scan your name badge for this information. Please wear your name badge at all times.

FLOOR PLAN

A Floor Plan of the New York Hilton-Midtown is included in this syllabus to help you find your way more easily.

HOSPITALITY DESK

The staff will be happy to answer any questions you have, or to make any arrangements that you may require. Staff members are located in the Rhinelander Gallery on the 2nd floor.

CELL PHONES AND PAGERS

As a courtesy to other attendees, please turn off your cell phones and pagers, or set to vibrate.

COAT CHECK

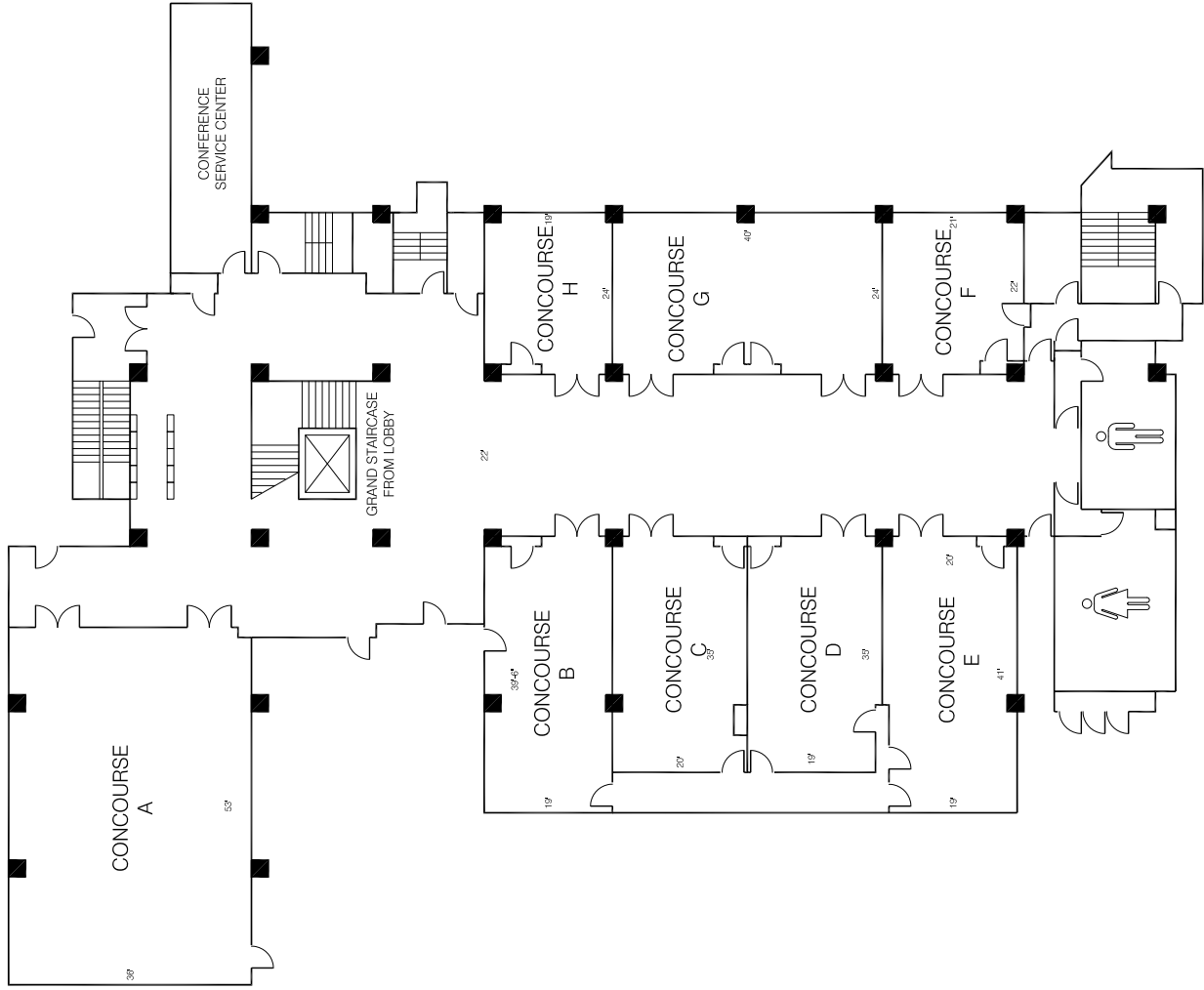
Coat Check is located on the 2nd floor.

FLOOR PLANS

AVID symposium®
Advances in Vascular Imaging and Diagnosis

VEITHsymposium/AIMsymposium/AVIDsymposium

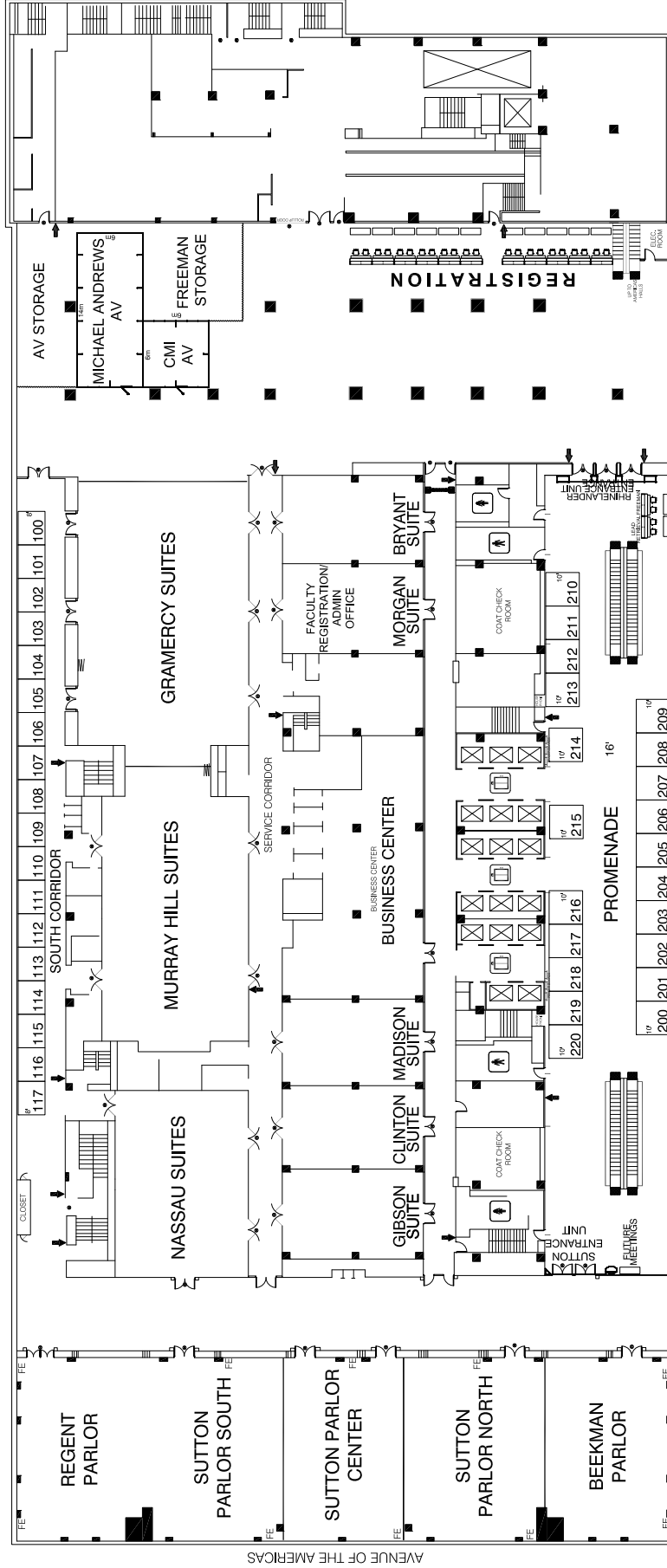
NOVEMBER 12-17, 2018



New York Hilton Midtown
Concourse Level

VEITHsymposium/AIMsymposium/AVIDsymposium

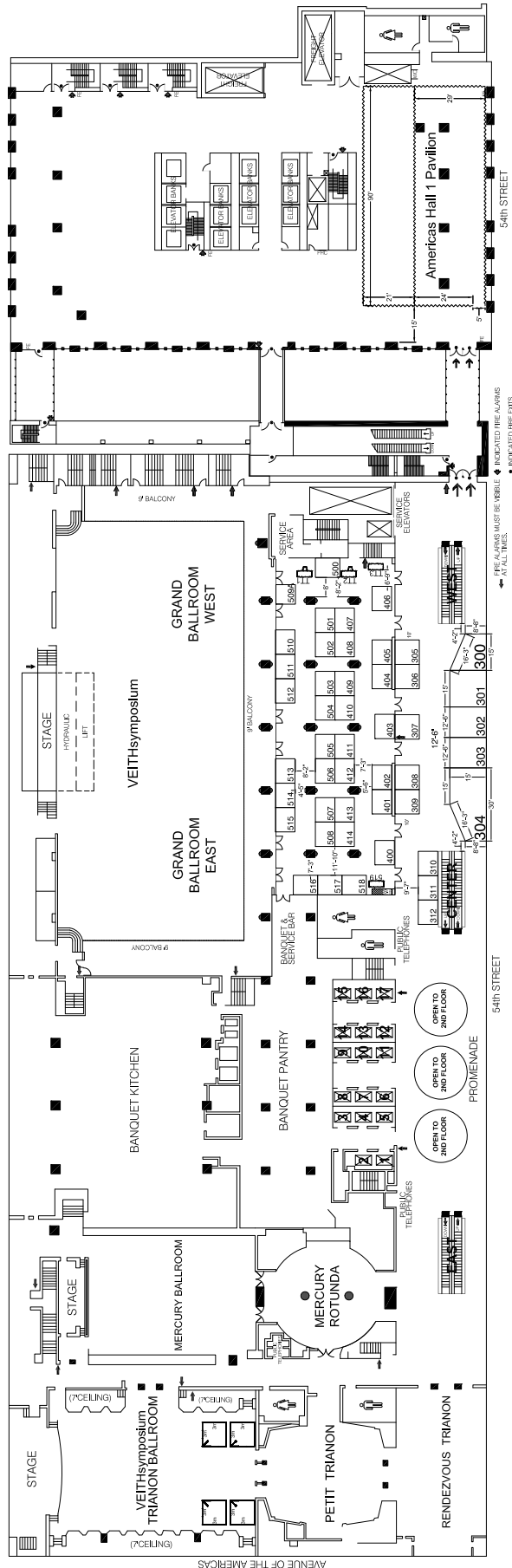
NOVEMBER 12-17, 2018



New York Hilton Midtown
2nd Floor Promenade & South Corridor

VEITHsymposium/AIMsymposium/AVIDsymposium

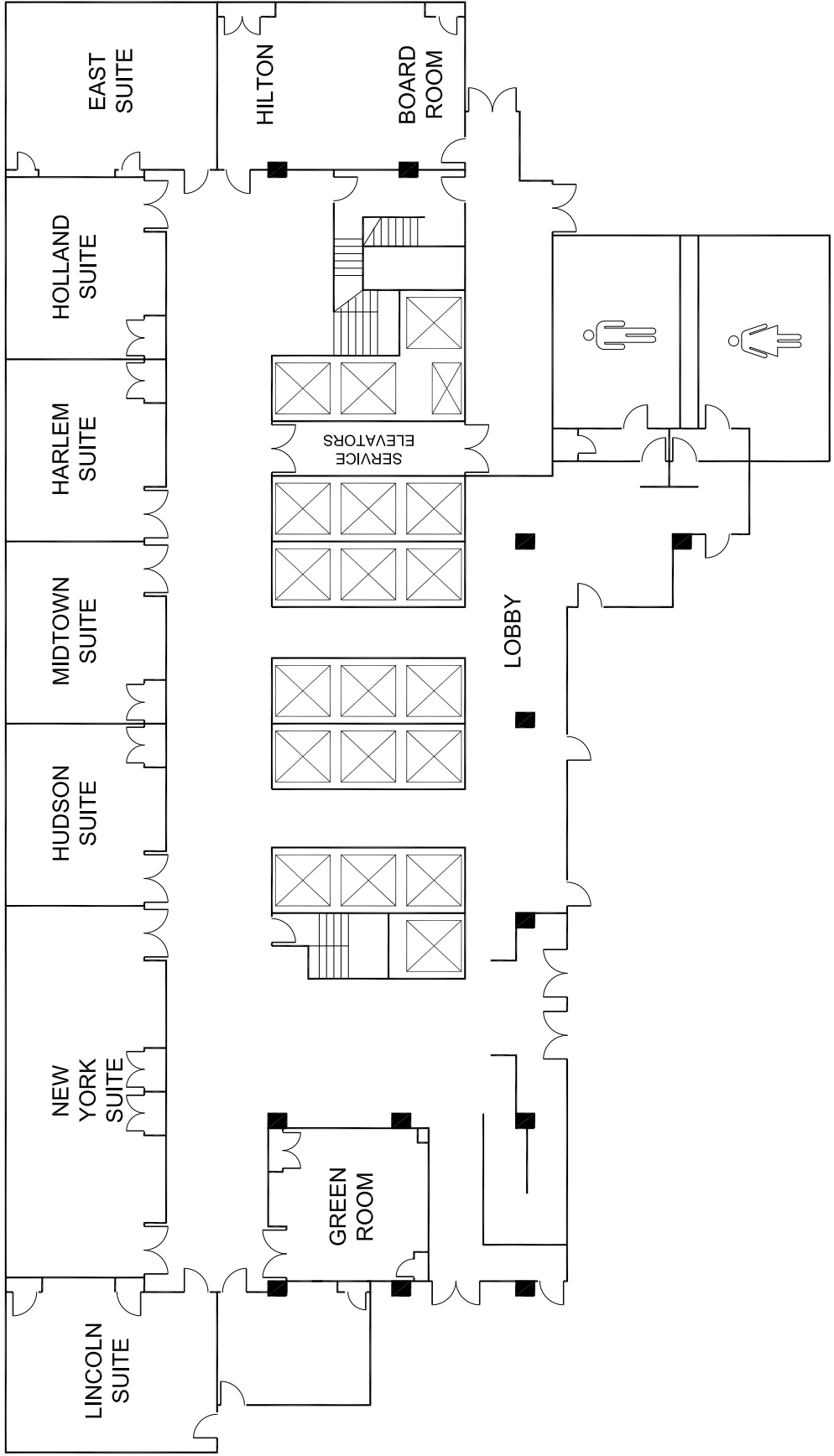
NOVEMBER 12-17, 2018



**New York Hilton Midtown
3rd Floor Promenade, Foyer & Americas Hall 1**

VEITHsymposium/AIMsymposium/AVIDsymposium

NOVEMBER 12-17, 2018



New York Hilton Midtown
4th Floor

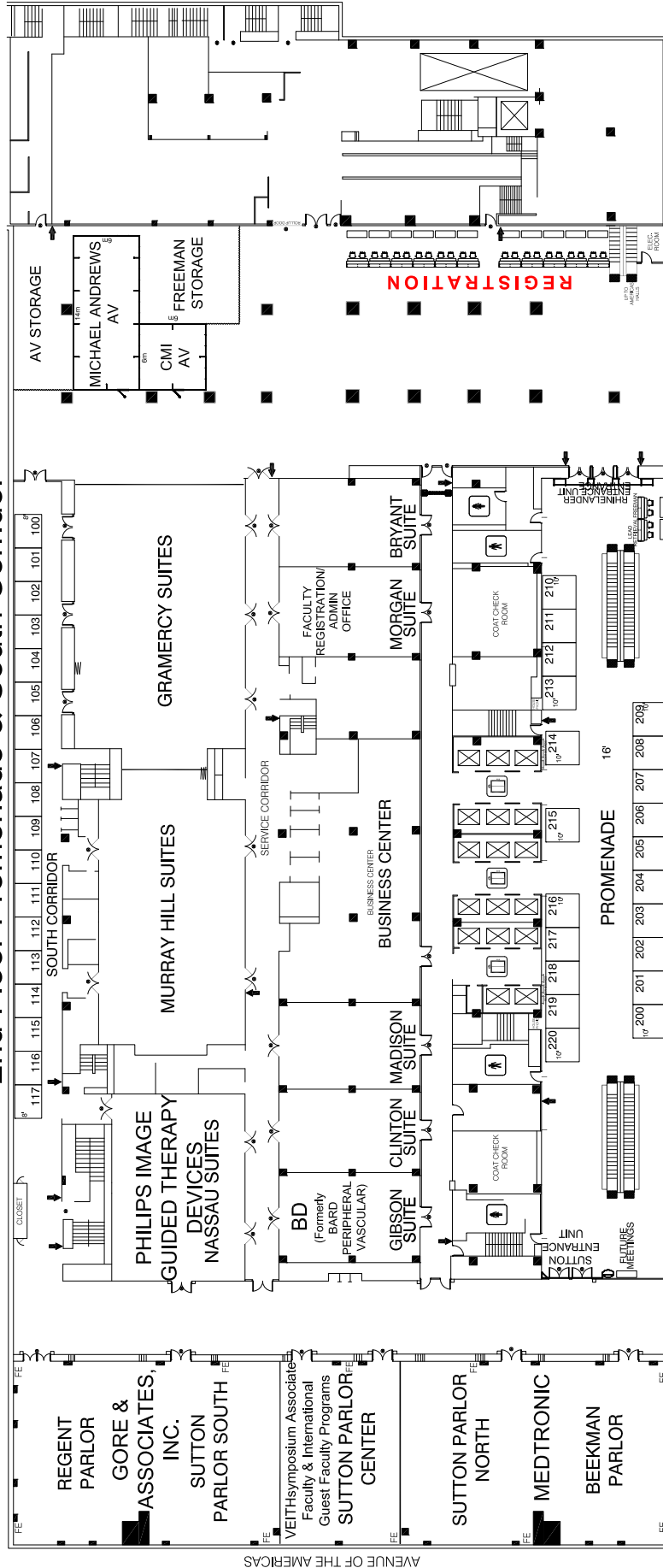
EXHIBITS AND PAVILIONS

AVID symposium®
Advances in Vascular Imaging and Diagnosis

VEITHsymposium/AIMsymposium/AVIDsymposium

NOVEMBER 12-17, 2018

2nd Floor Promenade & South Corridor



Booth/Location	Company
113 - South Corridor - 2nd Floor (Exhibiting on Friday and Saturday)	3D Systems
110 - South Corridor - 2nd Floor (Exhibiting on Friday and Saturday)	AngioAdvancements
Pavilion - Nassau Suites East and West - 2nd Floor	AngioAdvancements
216 - 2nd Floor Promenade	AngioDynamics
218 - 2nd Floor Promenade	Argon Medical Devices
220 - 2nd Floor Promenade	B. Braun Interventional Systems Inc.
111 - South Corridor - 2nd Floor (Exhibiting on Monday Only)	BD (Formerly Bard Peripheral Vascular)
117 - South Corridor - 2nd Floor	BD (Formerly Bard Peripheral Vascular)
204 - 2nd Floor Promenade	Bentley InnoMed GmbH
201 - 2nd Floor Promenade	Boston Scientific
207 - 2nd Floor Promenade	Brightwater Medical
	BT
	ComTech LLC
	Edwards Lifesciences

Booth/Location	Company
113 - South Corridor - 2nd Floor (Exhibiting on Friday and Saturday)	Parlex Medical Electronics
110 - South Corridor - 2nd Floor (Exhibiting on Friday and Saturday)	Philips Healthcare
Pavilion - Nassau Suites East and West - 2nd Floor	Philips Image Guided Therapy Devices
216 - 2nd Floor Promenade	PQ Biotech
220 - 2nd Floor Promenade	Philips Image Guided Therapy Devices
111 - South Corridor - 2nd Floor (Exhibiting on Monday Only)	Scanlan International, Inc.
117 - South Corridor - 2nd Floor	Stryker Neurovascular
204 - 2nd Floor Promenade	Tactile Medical
201 - 2nd Floor Promenade	VentureMed Group, Inc.
207 - 2nd Floor Promenade	Wolter Sangtec, Inc.
	Wolter Sangtec, Inc.
	Zero Gravity Skin

Booth/Location	Company
210 - 2nd Floor Promenade	Elsevier, Inc.
112 - South Corridor - 2nd Floor (Exhibiting on Monday Only)	Embolex, Inc.
Pavilion (Simulation) - Sutton Parlor South and Regent Parlor - 2nd Floor	Geac & Associates
108 - South Corridor - 2nd Floor	Guertel
111 - South Corridor - 2nd Floor (Exhibiting on Wednesday Only)	Inari Medical
206 - 2nd Floor Promenade	Inari Medical
215 - 2nd Floor Promenade	Inact Vascular
219 - 2nd Floor Promenade	KCI, An Veilby Company
Pavilion - Beekman Parlor and Sutton Parlor North - 2nd Floor	Medtronic
109 - South Corridor - 2nd Floor	Medtronic
210 - 2nd Floor Promenade	Merit Medical Systems, Inc.
210 - 2nd Floor Promenade	Merit Medical Systems, Inc.
107 - South Corridor - 2nd Floor (Exhibiting on Thursday Only)	Merit Medical Systems, Inc.
114 - South Corridor - 2nd Floor (Exhibiting on Friday and Saturday)	Mindray North America
203 - 2nd Floor Promenade	Ostial Corporation

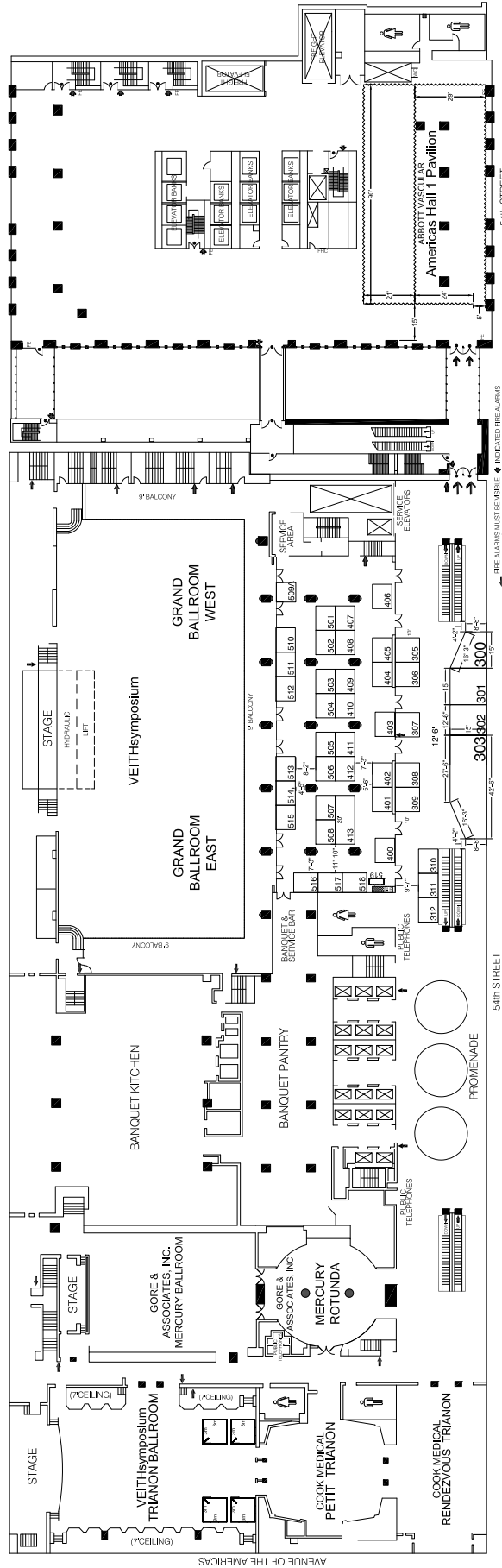
Booth/Location	Company
214 - 2nd Floor Promenade	Elsevier, Inc.
116 - South Corridor - 2nd Floor	Embolex, Inc.
205 - 2nd Floor Promenade	Geac & Associates
111 - South Corridor - 2nd Floor (Exhibiting on Thursday Only)	Guertel
211 - 2nd Floor Promenade	Inari Medical
110 - South Corridor - 2nd Floor	Inari Medical
Pavilion - Gibson Suite - 2nd Floor	Inact Vascular
215 - South Corridor - 2nd Floor (Exhibiting on Monday Only)	KCI, An Veilby Company
210 - 2nd Floor Promenade	Medtronic
113 - South Corridor - 2nd Floor	Medtronic
113 - South Corridor - 2nd Floor (Exhibiting on Wednesday Only)	Merit Medical Systems, Inc.
107 - South Corridor - 2nd Floor (Exhibiting on Thursday Only)	Merit Medical Systems, Inc.
114 - South Corridor - 2nd Floor (Exhibiting on Friday and Saturday)	Mindray North America
212 and 213 - 2nd Floor Promenade	Ostial Corporation

Booth/Location	Company
214 - 2nd Floor Promenade	3D Systems
116 - South Corridor - 2nd Floor	AngioAdvancements
205 - 2nd Floor Promenade	AngioAdvancements
111 - South Corridor - 2nd Floor (Exhibiting on Thursday Only)	AngioDynamics
211 - 2nd Floor Promenade	Argon Medical Devices
110 - South Corridor - 2nd Floor	B. Braun Interventional Systems Inc.
Pavilion - Gibson Suite - 2nd Floor	BD (Formerly Bard Peripheral Vascular)
215 - South Corridor - 2nd Floor (Exhibiting on Monday Only)	BD (Formerly Bard Peripheral Vascular)
210 - 2nd Floor Promenade	Bentley InnoMed GmbH
113 - South Corridor - 2nd Floor	Boston Scientific
113 - South Corridor - 2nd Floor (Exhibiting on Wednesday Only)	Brightwater Medical
107 - South Corridor - 2nd Floor (Exhibiting on Thursday Only)	BT
114 - South Corridor - 2nd Floor (Exhibiting on Friday and Saturday)	ComTech LLC
212 and 213 - 2nd Floor Promenade	Edwards Lifesciences

VEITHsymposium/AIMsymposium/AVIDsymposium

NOVEMBER 12-17, 2018

3rd Floor Promenade, Foyer & Americas Hall 1



Company	Booth/Location	Company	Booth/Location	Company	Booth/Location
Abbott Vascular	Pavilion - Americas Hall - 3rd Floor	Endovascular Today	519 - 3rd Floor Foyer	Ra Medical Systems, Inc.	413 - 3rd Floor Foyer
BD (formerly Bard Peripheral Vascular)	516, 517 and 518 - 3rd Floor Foyer	Getinge	513, 514 and 515 - 3rd Floor Foyer	SAGE Publishing	408 - 3rd Floor Foyer
Boston Scientific	300 - 3rd Floor Promenade	Gore & Associates	Pavilion - Mercury Rotunda and Ballroom - 3rd Floor	Shockwave Medical	403 - 3rd Floor Foyer
BTC	305 and 306 - 3rd Floor Promenade	Guerbet	302 - 3rd Floor Promenade	Siemens Healthineers	301 - 3rd Floor Promenade
Cook Medical	Pavilion - Pett Trianon and Rendezvous Tianon - 3rd Floor	HyperMed Imaging, Inc.	411 and 412 - 3rd Floor Foyer	Silk Road Medical	505 and 506 - 3rd Floor Foyer
Cordis, A Cardinal Health Company	401 - 3rd Floor Foyer	Janssen Pharmaceuticals, Inc.	400 - 3rd Floor Foyer	SITE Symposium	511 - 3rd Floor Foyer
CryoLife	512 - 3rd Floor Foyer	Medstreaming	404 and 405 - 3rd Floor Foyer	Terumo Aortic / Terumo Medical	303 - 3rd Floor Promenade
CX 2019/Vascular News	503 - 3rd Floor Foyer	Oscor, Inc.	307 - 3rd Floor Promenade	Vascular Simulations, Inc.	501 - 3rd Floor Foyer
DIVINE ID / CACVIS / IMEET	407 - 3rd Floor Foyer	Penumbra, Inc.	308 and 309 - 3rd Floor Promenade	Walk Vasculer	509A - 3rd Floor Foyer
Endologix, Inc.	310, 311 and 312 - 3rd Floor Promenade	Provasculer GmbH	510 - 3rd Floor Foyer	Ziehm Imaging, Inc.	507 and 508 - 3rd Floor Foyer

COMBINED EXHIBIT HALL for VEITHsymposium, AIMsymposium and AVIDsymposium
(MONDAY – FRIDAY/SATURDAY)

We acknowledge the participation of the following companies as exhibitors:

COMPANY	LOCATION
3D Systems	214 - 2nd Floor Promenade
Abbott	Pavilion - Americas Hall 1 - 3rd Floor
AngioAdvancements	116 - South Corridor - 2nd Floor
AngioAdvancements	205 – 2nd Floor Promenade
AngioDynamics	115 - South Corridor - 2nd Floor (Exhibiting on Thursday Only)
Argon Medical Devices	211 - 2nd Floor Promenade
B. Braun Interventional Systems Inc.	110 - South Corridor - 2nd Floor
BD (Formerly Bard Peripheral Vascular)	Pavilion - Gibson Suite - 2nd Floor
BD (Formerly Bard Peripheral Vascular)	516, 517 and 518 – 3rd Floor Foyer
BD (Formerly Bard Peripheral Vascular)	115 - South Corridor - 2nd Floor (Exhibiting on Monday Only)
Bentley	210 - 2nd Floor Promenade
Boston Scientific	300 – 2nd Floor Promenade
Boston Scientific	113 - South Corridor - 2nd Floor
BrightWater Medical	112 – South Corridor – 2nd Floor (Exhibiting on Wednesday Only)
BTG	305 and 306 - 3rd Floor Promenade
BTG International Inc.	107 - South Corridor - 2nd Floor
CoapTech LLC	114 – South Corridor – 2nd Floor
Cook Medical	Pavilion - Petit Trianon & Rendezvous Trianon – 3rd Floor
Cordis, A Cardinal Health Company	503 - 3rd Floor Foyer
CryoLife	512 - 3rd Floor Foyer
CX 2019/Vascular News	503 – 3rd Floor Foyer
DIVINE ID / CACVS / i-MEET	407 – 3rd Floor Foyer
Edwards Lifesciences	212 and 213 - 2nd Floor Promenade
Elsevier, Inc.	200 - 2nd Floor Promenade
Embolx, Inc.	112 - South Corridor - 2nd Floor (Exhibiting on Monday Only)
Endologix, Inc.	310, 311 and 312 - 3rd Floor Promenade
Endovascular Today	519 – 3rd Floor Foyer

EXHIBITS AND PAVILIONS

COMPANY	LOCATION
Getinge	513, 514 and 515 - 3rd Floor Foyer
Gore & Associates	Pavilion - Mercury Rotunda and Ballroom - 3rd Floor
Gore & Associates	Simulation Pavilion - Sutton Parlor South and Regent Parlor - 2nd Floor
Guerbet	302 – 3rd Floor Promenade
Guerbet	108 - South Corridor - 2nd Floor
HyperMed Imaging, Inc.	411 and 412 – 3rd Floor Foyer
Inari Medical	111 - South Corridor - 2nd Floor (Exhibiting on Wednesday Only)
Inari Medical	206 – 2nd Floor Promenade
Intact Vascular	215 - 2nd Floor Promenade
Janssen Pharmaceuticals, Inc.	400 - 3rd Floor Foyer
KCI, An Acelity Company	219 - 2nd Floor Promenade
Medsteaming	404 and 405 - 3rd Floor Foyer
Medtronic	Pavilion – Beekman Parlor and Sutton Parlor North – 2nd Floor
Medtronic	109 - South Corridor - 2nd Floor
Merit Medical Systems, Inc.	208 - 2nd Floor Promenade
Microvention, Inc.	110 - South Corridor - 2nd Floor (Exhibiting on Thursday Only)
Mindray North America	114 - South Corridor - 2nd Floor (Exhibiting on Friday and Saturday)
Oscor Inc.	307 - 3rd Floor Promenade
Ostial Corporation	203 - 2nd Floor Promenade
Parks Medical Electronics	113 - South Corridor - 2nd Floor (Exhibiting on Friday and Saturday)
Penumbra, Inc.	308 and 309 - 3rd Floor Promenade
Philips Healthcare	110 - South Corridor - 2nd Floor (Exhibiting Friday and Saturday)
Philips IGT D	Pavilion - Nassau Suites East and West - 2nd Floor
Philips Image Guided Therapy Devices	216 - 2nd Floor Promenade
PQ Bypass, Inc.	218 - 2nd Floor Promenade
Provascular GmbH	510 – 3rd Floor Foyer
Ra Medical Systems, Inc.	413 - 3rd Floor Foyer
SAGE Publishing	408 – 3rd Floor Foyer
Scanlan International, Inc.	220 - 2nd Floor Promenade
Shockwave Medical	403 - 3rd Floor Foyer
Siemens Healthineers	301 - 3rd Floor Promenade

EXHIBITS AND PAVILIONS

COMPANY	LOCATION
Silk Road Medical	505 and 506 - 3rd Floor Foyer
SITE Symposium	511 - 3rd Floor Foyer
Stryker Neurovascular	117 - South Corridor - 2nd Floor
Tactile Medical	217 - 2nd Floor Promenade
Terumo Aortic / Terumo Medical	303 - 3rd Floor Promenade
Vascular Simulations, Inc.	501 - 511 - 3rd Floor Foyer
VentureMed Group, Inc.	204 - 2nd Floor Promenade
Walk Vascular	509A - 3rd Floor Foyer
Wexler Surgical, Inc.	209 - 2nd Floor Promenade
Wolters Kluwer	201 - 2nd Floor Promenade
Zero Gravity Skin.	207 - 2nd Floor Promenade
Ziehm Imaging	507 and 508 - 3rd Floor Foyer

PAVILIONS

VEITHsymposium, AIMsymposium and AVIDsymposium
(Tuesday – Friday/Saturday)

COMPANY	LOCATION
Abbott	Americas Hall 1, 3rd Floor
Bard Peripheral Vascular	Gibson Suite, 2nd Floor
Cook Medical	Petit Trianon & Rendezvous Trianon, 3rd Floor
Gore & Associates	Mercury Rotunda & Ballroom, 3rd Floor
Gore & Associates	Sutton Parlor South and Regent Parlor, 2nd Floor
Medtronic	Beekman Parlor & Sutton Parlor North, 2nd Floor
Philips Image Guided Therapy Devices	Nassau Suites East and West, 2nd Floor

PROGRAM SCHEDULE

AVID symposium®
Advances in Vascular Imaging and Diagnosis

FRIDAY, NOVEMBER 16, 2018

7:50 – 8:00 **Welcome And Opening Remarks: Navigating The Meeting And Optimizing Your Experience**

*George L. Berdejo, BA, RVT
Natalie A. Marks, MD, RVT, RPVI*

SESSION 1

CASE-BASED LEARNING I: QUERIES, QUANDARIES AND QUAGMIRES IN VASCULAR IMAGING – TECHNICAL TRIALS

Moderator: *Laurence Needleman, MD*

*Lessons Learned From Challenging Cases and Missed Diagnoses. Benefit from this seasoned faculty and use their **Quality Assurance** experiences to help you become a better clinician. “Case Based Learning” with angiographic, CT and MR Correlation. During this session, the practice of clinical vascular sonography and its relationship to patient management will be highlighted and stressed by experts.*

- | | |
|-------------|---|
| 8:00 – 8:12 | Lower Extremity Arterial
<i>Ann Marie Kupinski, PhD, RVT</i> |
| 8:12 – 8:24 | Lower Extremity Venous Reflux Testing
<i>Diana L. Neuhardt, RVT, RPhS</i> |
| 8:24 – 8:36 | Cerebrovascular
<i>Phillip J. Bendick, PhD, RVT</i> |
| 8:36 – 8:48 | Hemodialysis Access
<i>Kelly R. Byrnes, BS, RVT</i> |
| 8:48 – 9:00 | Abdominal Imaging
<i>Traci B. Fox, EdD, RDMS, RVT</i> |
| 9:00 – 9:15 | Panel Discussion |
| 9:15 – 9:35 | Break – Visit Exhibits (2nd and 3rd Floors) |

SESSION 2

VENOUS: THROMBO-EMBOLIC DISEASE

Moderator: *Mark A. Oliver, MD, RPVI, RVT*

- | | |
|-------------|--|
| 9:35 – 9:45 | Multidisciplinary Recommendations From the Society of Radiologists in Ultrasound (SRU) Consensus Conference on Ultrasound for Lower Extremity Deep Venous Thrombosis
<i>Laurence Needleman, MD</i> |
| 9:45 – 9:55 | Long-Term Effects Of Ilio-Femoral Vein Thrombosis
<i>Sareh Rajaei, MD, MPH</i> |

PROGRAM SCHEDULE

FRIDAY SESSIONS 2–3

9:55 – 10:05	Role Of The Vascular Lab In The Expanding Interventional Treatment Of Iliocaval Venous Occlusion <i>Richard C. Pennell, MD, RPVI</i>
10:05 – 10:35	Panel Discussion Super Panel on Venous Thromboembolic Disease And The SRU Consensus Recommendations Moderator: <i>Mark A. Oliver, MD, RPVI, RVT</i> Panelists: <i>Nicos Labropoulos, BSc (Med), PhD, DIC, RVT</i> <i>Laurence Needleman, MD</i> <i>Diana L. Neuhardt, RVT, RPhS</i> <i>Richard C. Pennell, MD, RPVI</i> <i>Sareh Rajaei, MD, MPH</i> <i>Brian Sapp, RVT, RPhS</i>
10:35 – 10:45	Break - Visit Exhibits (2nd Floor and 3rd Floors) Transition to Workshops (Americas Hall 2, 3rd Floor)

SESSION 3

WORKSHOP ROTATION 1

Location: Americas Hall 2, 3rd Floor

10:45 – 11:45

ROOM 1

1. Color Optimization

Frank Miele, MSEE

Color Doppler has some similarities to spectral Doppler, some similarities to B-mode imaging, and some unique characteristics. As such, optimizing color and understanding color artifacts is somewhat different than understanding imaging or spectral Doppler. In this lecture (workshop) you will be shown color situations and then asked how to best improve the image or eliminate the artifact(s).

ROOM 2

2. Quality Matters – Manage It Well

Richard Dubin, AAS-DMS, RVT, RDMS

Angela Rodriguez-Wong, MD, RPVI, RVT

This lecture/workshop will discuss basic and advanced setup of presets for venous, arterial and carotid duplex examinations. What are the common B-Mode, Spectral and Color Doppler and basic dynamic optimization parameters and how to quickly adjust them for maximum performance. The setup for more advanced needs – Visceral, Dialysis Access, Transcranial Doppler Duplex and EVAR Duplex will also be covered.

ROOM 3

3. Cardiac Effects On Duplex Vascular Ultrasound Testing

Heather L. Gornik, MD

David M. Williams, MS

The effect of cardiac pathologies on flow patterns in the venous and arterial circulations and their impact of the peripheral duplex examination and interpretation will be discussed. This will be a case study lecture/workshop.

ROOM 4	<p>4. Principles Of Duplex Diagnosis <i>Laurence Needleman, MD</i> <i>Richard C. Pennell, MD, RPVI</i></p> <p>This workshop will discuss the step-by-step protocol for interpreting the vascular ultrasound study with attention to potential pitfalls in a variety of basic and difficult vascular cases.</p>
ROOM 5	<p>5. Ergonomics <i>Matthew Hernandez, BSc, DPT, CSCS</i></p> <p>Work postures are the one solution over which sonographers have the most control. Regardless of the work schedule or the work station equipment, if sonographers fail to make changes in how they perform exams, they will continue to be at risk for occupational injuries. This workshop will provide practical solutions and advice for maximizing your ergonomic experience in order to reduce the long-term negative effects of WRMSDs.</p>
ROOM 6	<p>6. Doppler Facts And Misconceptions <i>Traci B. Fox, EdD, RDMS, RVT</i></p>
11:45 – 12:05	<p>Pick up Lunch in the South Corridor Exhibit Area (2nd Floor) and return to the Murray Hill Suites for the Luncheon Program.</p>

SESSION 4

LUNCHEON PROGRAM: WOUND CARE AND DIABETIC FOOT PRINCIPLES

Moderators: *George L. Berdejo, BA, RVT*
William D. Suggs, MD

12:05 – 12:14	<p>Doppler In Wound Care Clinics: Microcirculatory Assessment: Why, When, How <i>Sergio X. Salles-Cunha, PhD, RVT</i></p>
12:15 – 12:24	<p>Differences In Venous, Arterial And Combination Ulcers And Why It's Important <i>William D. Suggs, MD</i></p>
12:25 – 12:34	<p>Evaluation And Testing For Diabetic Foot Complications <i>Phillip J. Bendick, PhD</i></p>
12:35 – 12:44	<p>Impact Of Vein And Artery Disease <i>Ratna C. Singh, MD, RPVI</i></p>
12:45 – 12:55	<p>Panel Discussion</p>
12:55 – 1:10	<p>Break – Visit Exhibits (2nd Floor and 3rd Floors)</p>

PROGRAM SCHEDULE

FRIDAY SESSIONS 5–6

SESSION 5

PRACTICE ENHANCEMENTS I: “APPROPRIATE USE” OF THE APPROPRIATE USE CRITERIA IN POST INTERVENTION FOLLOW-UP: REVIEW OF THE EVIDENCE

Moderator: *Ann Marie Kupinski, PhD, RVT*

- | | |
|-------------|---|
| 1:10 – 1:19 | Lower Extremity Angioplasty And Stenting
<i>Phillip J. Bendick, PhD, RVT</i> |
| 1:20 – 1:29 | Lower Extremity Bypass Grafts
<i>Ann Marie Kupinski, PhD, RVT</i> |
| 1:30 – 1:39 | Carotid Endarterectomy And Carotid Artery Stenting
<i>Ali F. AbuRahma, MD</i> |
| 1:40 – 1:49 | Endovascular Aortic Aneurysm Repair
<i>Keith D. Calligaro, MD</i> |
| 1:50 – 1:59 | Vein Ablation Procedures
<i>Thomas F. O’Donnell, Jr., MD</i> |
| 1:59 – 2:11 | Panel Discussion |

SESSION 6

CURVEBALLS AND CONTROVERSIES

Moderators: *George L. Berdejo, BA, RVT*
Natalie A. Marks, MD, RPVI, RVT

- | | |
|-------------|---|
| 2:12 – 2:22 | Things You Are Doing Wrong In Vascular Ultrasound
<i>Traci B. Fox, EdD, RDMS, RVT</i> |
| 2:22 – 2:32 | Knobology Alters Velocity Measurements, Instruments May Vary: Quality Control Is Mandatory
<i>Sergio X. Salles-Cunha, PhD, RVT</i> |
| 2:32 – 2:42 | Unusual Causes Of Leg Pain And Swelling: (Things Besides DVT And Reflux) Case Study Presentation
<i>Leslie M. Scoutt, MD</i> |
| 2:42 – 2:52 | Calf Vein Imaging: My 5 Top Tips And Why You Should Be Doing It
<i>Brian Sapp, RVT, RPhS</i> |
| 2:52 – 3:02 | Current Status Of Point Of Care Ultrasound – Should There Be Better Oversight And What Does This Look Like
<i>R. Eugene Zierler, MD, RPVI</i> |

SESSION 7 ARTERIAL EVALUATION

Moderator: *Sergio X. Salles-Cunha, PhD, RVT*

- | | |
|-------------|--|
| 3:03 – 3:13 | Arterial Pressure: How To Measure It Correctly And Differences Between Oscillometric And Doppler Ultrasonic Measurements
<i>Sergio X. Salles-Cunha, PhD, RVT</i> |
| 3:13 – 3:23 | Review Of Non-Atherosclerotic Arterial Syndromes Of The Lower Extremities
<i>Richard C. Pennell, MD, RPVI</i> |
| 3:23 – 3:33 | Uncommon Aneurysm Case Studies
<i>David M. Williams, MS</i> |
| 3:33 – 3:43 | Imaging For Aortoiliac Pathology
<i>Nicos Labropoulos, BSc (Med), PhD, DIC, RVT</i> |
| 3:43 – 4:00 | Panel Discussion – Combined Sessions 6 and 7 |

SESSION 8 MISCELLANEOUS TOPICS IN VASCULAR ULTRASOUND

Moderators: *George L. Berdejo, BA, RVT*
Angelique Hernandez, AS, RVT

- | | |
|-------------|--|
| 4:01 – 4:11 | Can Duplex Ultrasonography Evaluate Unsuspected Subclinical Axillary/Subclavian Stenosis Before Axillo-Bifemoral Bypasses Or Is Angiography Always Mandatory
<i>Keith D. Calligaro, MD</i> |
| 4:11 – 4:21 | Duplex Diagnosis Of Abdominal Venous Compression Syndromes
<i>R. Eugene Zierler, MD, RPVI</i> |
| 4:21 – 4:31 | How To Avoid Common Doppler Mistakes
<i>David M. Williams, MS</i> |

SESSION 9 MORE ON VENOUS EVALUATION: CHRONIC VENOUS INSUFFICIENCY (CVI)

Moderator: *Nicos Labropoulos, BSc (Med), PhD, DIC, RVT*

- | | |
|-------------|---|
| 4:31 – 4:41 | Patterns Of Lower Extremity Vein Reflux: Segmental, Multi-Segmental, Diffuse, Proximal, Distal Non-Saphenous Reflux
<i>Diana L. Neuhardt, RVT, RPhS</i> |
| 4:41 – 4:51 | Patterns Of Pelvic Vein Reflux And When To Be Suspicious Based On The Thigh Examination, History, And Findings
<i>Sergio X. Salles-Cunha, PhD, RVT</i> |
| 4:51 – 5:01 | When To Treat 50% Area Reduction In Non-Thrombotic Iliac Veins
<i>Alan M. Dietzek, MD, RPVI</i> |

PROGRAM SCHEDULE

SATURDAY SESSION 9

- | | |
|-------------|--|
| 5:01 – 5:11 | Effect Of Iliac Vein Stenting On Infrainguinal Reflux
<i>Anil P. Hingorani, MD</i> |
| 5:11 – 5:25 | Panel Discussion – Combined Sessions 8 and 9 |
| 5:25 – 5:30 | Summary of the Day |

SATURDAY, NOVEMBER 17, 2018

SESSION 10

PRINCIPLES TUNE-UP: HOW SHARP ARE YOU - PART I

Moderators: *George L. Berdejo, BA, RVT*
Fernando Amador, RVT

7:00 – 7:40 **Principles Tune-Up**
Frederick Kremkau, PhD

SESSION 11

MORE ON VENOUS DISEASE: DIAGNOSTIC VENOUS MIX

Moderator: *Nicos Labropoulos, BSc (Med), PhD, DIC, RVT*

7:40 – 7:48 **Venous Anatomic Variations And Their Importance**
Angela A. Kokkosis, MD, RPVI

7:48 – 7:56 **Diagnostic Issues In Venous Disease**
Nicos Labropoulos, BSc (Med), PhD, DIC, RVT

7:56 – 8:04 **Use Of CT And MR In Venous Disease**
Neil M. Khilnani, MD

8:04 – 8:12 **Role Of IVUS**
Antonios P. Gasparis, MD

8:12 – 8:20 **How Do I Use Venography**
Mark H. Meissner, MD

8:20 – 8:28 **Evaluation Of Vein Compression Syndromes**
Thomas S. Maldonado, MD

8:28 – 8:36 **Imaging For Interventions**
Steve Elias, MD

8:36 – 8:44 **Venous Inflammation: Seeing The Microcosm**
Joseph D. Raffetto, MD

8:44 – 9:00 **Panel Discussion**

9:00 – 9:20 **Break – Visit Exhibits (2nd Floor and 3rd Floors)**

PROGRAM SCHEDULE

SATURDAY SESSIONS 12–13

SESSION 12

THE CURRENT HEALTH CARE ENVIRONMENT EVOLVES: REIMBURSEMENT; IMPACT OF OBAMACARE (ACA), ACOs, ETC. AND THE IMPACT ON VASCULAR ULTRASOUND

Moderator: *Anne M. Jones, RN, BSN, RVT, RDMS*

9:20 – 9:29 **Critical Issues For The Vascular Ultrasound Professional And Introduction To The Session**

Anne M. Jones, RN, BSN, RVT, RDMS

9:29 – 10:00 **Super Panel Discussion**

Moderator: *Anne M. Jones, RN, BSN, RVT, RDMS*

Panelists: *Kelly R. Byrnes, BS, RVT*

Alan M. Dietzek, MD, RPVI

Joseph P. Hughes, RVT, RVS

Laurence Needleman, MD

Sean P. Roddy, MD

Robert M. Zwolak, MD, PhD

SESSION 13

PRACTICE ENHANCEMENTS II

Moderators: *George L. Berdejo, BA, RVT*
Anne M. Jones, RN, BSN, RVT, RDMS

10:00 – 10:09 **A Common Sense Approach To Classification Of Arterial Doppler Waveforms**

R. Eugene Zierler, MD, RPVI

10:10 – 10:19 **Implications Of Poor Patient Compliance After EVAR**

Keith D. Calligaro, MD

10:20 – 10:29 **Ultrasound Ergonomics: How To Save Your Neck And Back And Prolong Your Career: Vascular Sonographer Ergonomics**

Matthew P. Hernandez, BSc, DPT, CSCS

10:30 – 10:39 **The New Paradigm For Understanding And Teaching Sonographic Principles Required By The Massive Post-Processing In Contemporary Sonographic Instruments**

Frederick Kremkau, PhD

10:40 – 10:49 **Update On Vein Center Accreditation**

Alan M. Dietzek, MD, RPVI

10:49 – 11:00 **Panel Discussion – Combined Sessions 10 and 11**

11:00 – 11:10 **Transition to Workshops (2nd Floor)**

SESSION 14

WORKSHOP ROTATION 2

11:10 – 12:10	
Murray Hill Suite	Principles Tune-Up: How Sharp Are You - Part II <i>Frederick Kremkau, PhD</i>
Gibson Suite	Cerebrovascular Ultrasound <i>Ann Marie Kupinski, PhD, RVT</i> <i>Kelvin A. Portalatin, AA, RVT</i>
Clinton Suite	The Hemodialysis Access Examination <i>Kelly R. Byrnes, BS, RVT</i> <i>Angelique Hernandez, AS, RVT</i>
Madison Suite	The Renal Artery Evaluation <i>Traci B. Fox, EdD, RDMS, RVT</i> <i>Diana L. Neuhardt, RVT, RPhS</i>
Nassau Suite East	The Reflux Examination <i>Diana L. Neuhardt, RVT, RPhS</i>
Nassau Suite West	Physiologic Testing <i>Fernando Amador, RVT</i> <i>Steven J. Knight, BSc</i>
12:10 – 12:30	Pick up Lunch in the South Corridor Exhibit Area (2nd Floor) and return to the Murray Hill Suites for the Luncheon Program.

SESSION 15

LUNCHEON PROGRAM: PEARLS, PERILS, PITFALLS OF SOCIAL MEDIA, LIST SERVES AND THE INTERNET

Moderators: *George L. Berdejo, BA, RVT*
Kelvin Portalatin, AA, RVT

12:30 – 12:40	Facebook Administrator And User Perspective <i>Brian Sapp, RVT, RPhS</i>
12:40 – 12:50	Twitter <i>Heather L. Gornik, MD</i>
12:50 – 1:00	List Serves <i>Steven J. Knight, BSc</i>
1:00 – 1:10	The Internet <i>Ann Marie Kupinski, PhD, RVT</i>
1:10 – 1:20	Panel Discussion
1:20 – 1:30	Transition to Workshops (2nd Floor)

PROGRAM SCHEDULE

SATURDAY SESSIONS 16–17

SESSION 16

WORKSHOP ROTATION 3

1:30 – 2:30

Murray Hill

Interpretation Of Vascular Studies: Case Reviews

Laurence Needleman, MD

R. Eugene Zierler, MD, RPVI

Richard C. Pennell, MD, RPVI

Gibson

Suite

Cerebrovascular Ultrasound

Ann Marie Kupinski, PhD, RVT

Kelvin Portalatin, AA, RVT

Clinton

Suite

The Hemodialysis Access Examination

Kelly R. Byrnes, BS, RVT

Angelique Hernandez, AS, RVT

Madison

Suite

The Renal Artery Evaluation

Traci B. Fox, EdD, RDMS, RVT

Nassau

Suite East

The Reflux Examination

Diana L. Neuhardt, RVT, RPhS

Nassau

Suite West

Physiologic Testing

Fernando Amador, RVT

Steven J. Knight, BSc

2:30 – 2:40

Transition to Plenary Sessions (Murray Hill Suites, 2nd Floor)

SESSION 17

HEMODIALYSIS ACCESS

Moderator: *Phillip J. Bendick, PhD, RVT*

2:40 – 2:48

Volume Flow Or Velocity: Which Predicts Access Failure Better?

Clifford M. Sales, MD, MBA

2:48 – 2:56

Routine Use Of Ultrasound To Avert Mechanical Complications During Placement Of Tunneled Dialysis Catheters For Hemodialysis: An Analysis Of 2805 Cases

Anil P. Hingorani, MD

2:56 – 3:04

Duplex Assessment Of Dialysis Access Maturation

R. Eugene Zierler, MD, RPVI

3:04 – 3:12

Access Site Cannulation Mapping: Why It's Important And How It Helps The Patient And The Dialysis Staff

Ratna C. Singh, MD, RPVI

3:12 – 3:20

A Novel Technique For Duplex-Guided Office-Based Interventions For Patients With Acute Arteriovenous Fistula Occlusion

Anil P. Hingorani, MD

SESSION 18

CASE-BASED LEARNING II: QUERIES, QUANDARIES AND QUAGMIRES IN VASCULAR IMAGING – INTERPRETATION CHALLENGES

Moderators: *Phillip J. Bendick, PhD, RVT*
Natalie A. Marks, MD, RPVI, RVT

Lessons Learned from Challenging Cases and Missed Diagnoses. Benefit from this seasoned faculty and use their Quality Assurance experiences to help you become a better clinician. “Case Based Learning” with angiographic, CT and MR correlation. During this session, the practice of clinical vascular sonography and its relationship to patient management will be highlighted and stressed by experts.

3:20 – 3:30	Cerebrovascular Laurence Needleman, MD
3:30 – 3:40	Lower Extremity Arterial <i>Ann Marie Kupinski, PhD, RVT</i>
3:40 – 3:50	Upper Extremity Venous And Hemodialysis Access <i>Natalie A. Marks, MD, RPVI, RVT</i>
3:50 – 4:00	Abdominal Vascular Imaging <i>Leslie M. Scoutt, MD</i>
4:00 – 4:10	Panel Discussion – Combined Sessions 17 and 18

SESSION 19

CEREBROVASCULAR

Moderator: *Laurence Needleman, MD*

4:10 – 4:20	Update On The IAC Carotid Criteria Project: Is This Any Closer To Reality <i>Heather L. Gornik, MD</i>
4:20 – 4:30	The “Other” Carotid Duplex Criteria – Common Carotid, External Carotid, And Vertebral <i>R. Eugene Zierler, MD, RPVI</i>
4:30 – 4:40	Diagnosis Of ICA String Sign, Pseudo-Occlusion Or True Occlusion: Is Duplex Ultrasound Sufficient To Determine Accurately Patency And Operability <i>Natalie A. Marks, MD, RPVI, RVT</i>
4:40 – 4:50	Vertebral Artery Pathologies <i>Laurence Needleman, MD</i>
4:50 – 5:00	Complementary Role Of Transcranial Doppler In Patients With Carotid Artery Disease <i>Joseph P. Hughes, RVT, RVS</i>
5:00 – 5:10	Non-Atherosclerotic Pathology In The Carotid Arteries <i>Leslie M. Scoutt, MD</i>

PROGRAM SCHEDULE

SATURDAY SESSION 19

5:10 – 5:25	Panel Discussion
5:25 – 5:30	Closing Remarks <i>George L. Berdejo, BA, RVT</i> <i>Natalie A. Marks, MD, RVT, RPVI</i>
5:30	Raffle Drawing – You Must Be Present To Win
5:30	Symposium Ends

FACULTY LISTING AND FACULTY DISCLOSURE STATEMENT



A

Ali F. AbuRahma, MD
Charleston, West Virginia

Fernando Amador, RVT
New York, New York

B

Phillip J. Bendick, PhD, RVT, FSVU
Royal Oak, Michigan

George L. Berdejo, BA, RVT, FSVU
White Plains, New York

Kelly R. Byrnes, BS, RVT, FSVU
Louisville, Kentucky

C

Keith D. Calligaro, MD
Philadelphia, Pennsylvania

D

Alan M. Dietzek, MD, RPVI, FACS
Danbury, Connecticut

Richard Dubin, AAS-DMS, RVT, RDMS
Bronx, New York

E

Steve Elias, MD
Englewood, New Jersey

F

Traci B. Fox, EdD, RDMS, RVT
Philadelphia, Pennsylvania

G

Antonios P. Gasparis, MD
Stony Brook, New York

Heather L. Gornik, MD
Cleveland, Ohio

H

Angelique Hernandez, AS, RVT
Danbury, Connecticut

Matthew P. Hernandez, B.Sc, DPT, CSCS
New York, New York

Anil P. Hingorani, MD
Brooklyn, New York

Joseph P. Hughes, RVT, RVS, FSVU
Taunton, Massachusetts

J

Anne M. Jones, RN, BSN, RVT, RDMS, FSVU, FSDMS
Winston-Salem, North Carolina

K

Neil M. Khilnani, MD
New York, New York

Steven J. Knight, BSc
Boston, Massachusetts

Angela A. Kokkosis, MD, RPVI
Stony Brook, New York

Frederick Kremkau, PhD
Winston-Salem, North Carolina

Ann Marie Kupinski, PhD, RVT, FSVU
Albany, New York

FACULTY LISTING

L

Nicos Labropoulos, BSc (Med), PhD, DIC, RVT
Stony Brook, New York

M

Thomas S. Maldonado, MD
New York, New York

Natalie A. Marks, MD, RPVI, RVT, FSVU
Brooklyn, New York

Mark H. Meissner, MD
Seattle, Washington

Frank Miele, MSEE
Forney, Texas

N

Laurence Needleman, MD
Philadelphia, Pennsylvania

Diana L. Neuhardt, RVT, RPhS, FSVU
Phoenix, Arizona

O

Thomas F. O'Donnell, Jr., MD
Boston, Massachusetts

Mark A. Oliver, MD, RPVI, RVT, FSVU
Morristown, New Jersey

P

Richard C. Pennell, MD, RPVI, FACS
St. Louis, Missouri

Kelvin Portalatin, AA, RVT
Bronx, New York

R

Joseph D. Raffetto, MD
West Roxbury, Massachusetts

Sareh Rajaei, MD, MPH
Brooklyn, New York

Sean P. Roddy, MD
Albany, New York

Angela Rodriguez-Wong, MD, RPVI, RVT
Bronx, New York

S

Clifford M. Sales, MD, MBA, FACS
Summit, New Jersey

Sergio X. Salles-Cunha, PhD, RVT, FSVU
Jackson Beach, Florida

Brian Sapp, RVT, RPhS
Newnan, Georgia

Leslie M. Scoutt, MD
New Haven, Connecticut

Ratna C. Singh, MD, RPVI
White Plains, New York

William D. Suggs, MD
White Plains, New York

W

David M. Williams, MS
Florence, South Carolina

Z

R. Eugene Zierler, MD, RPVI
Seattle, Washington

Robert M. Zwolak, MD, PhD
Lebanon, New Hampshire

FACULTY DISCLOSURE STATEMENT

ADVANCES IN VASCULAR IMAGING AND DIAGNOSIS (AVIDsymposium)

NOVEMBER 16-17, 2018

In accordance with the Standards for Commercial Support issued by the Accreditation Council for Continuing Medical Education (ACCME), The Cleveland Clinic Foundation Center for Continuing Education requires resolution of all faculty conflicts of interest to ensure CME activities are free of commercial bias.

The following faculty have indicated that they may have a Relationship(s) which, in the context of their presentation(s) could be perceived as a potential conflict of interest:

Steve Elias

Company(ies): Medtronic Inc., Vascular Insights LLC,
LeMaitre Inc., Hancock Jaffe Labs
Relationship(s): Consulting

Heather L. Gornik

Company(ies): CVR Global
Relationship(s): Research

Antonios P. Gasparis

Company(ies): Philips
Relationship(s): Consulting, Teaching and Speaking

The following faculty have indicated they have no Relationship(s) which, in the context of their presentation(s), could be perceived as a potential conflict of interest:

Ali F. AbuRahma

Fernando Amador

Phillip J. Bendick

George L. Berdejo

Kelly R. Byrnes

Keith D. Calligaro

Alan M. Dietzek

Richard Dubin

Traci B. Fox

Angelique Hernandez

Matthew P. Hernandez

Anil P. Hingorani

Joseph P. Hughes

Anne M. Jones

Neil M. Khilnani

Steven J. Knight

Angela A. Kokkosis

Frederick Kremkau

Ann Marie Kupinski

Nicos Labropoulos

Thomas S. Maldonado

Natalie A. Marks

Mark H. Meissner

Frank Miele

Laurence Needleman

Diana L. Neuhardt

Thomas F. O'Donnell, Jr.

Mark A. Oliver

Richard C. Pennell

Kelvin Portalatin

Joseph D. Raffetto

Sareh Rajaei

Sean P. Roddy

Angela Rodriguez-Wong

Clifford M. Sales

Sergio X. Salles-Cunha

Brian Sapp

Leslie M. Scutt

Ratna C. Singh

William D. Suggs

David M. Williams

R. Eugene Zierler

Robert M. Zwolak

CME CERTIFICATE AND COURSE EVALUATION



CME CERTIFICATE AND COURSE EVALUATION

Your CME certificate will be available online immediately following the meeting. Please refer to the instructions below on how to obtain your certificate and complete a brief, optional course evaluation. Please note that credits will not be offered past 5:00 p.m. on February 28, 2019, so please visit the website to claim your credits as soon as possible.

How to Apply for AVIDsymposium AMA PRA Category 1 Credits™ using My CME:

Step 1: Go to: <http://www.cfcme.org/AVID2018-live>

Step 2: Login using your existing 'My CME' login

Please note: If you can't remember your password, please use the 'reset password' link

Forgot your password? Please use the following URL to reset your password:

<http://cce.ccf.org/ccecme/process?a=forgot-password-view>

If you cannot login, please create a new account by clicking on the following link (or typing into your browser) and completing the information: cfcme.org/newprofile Once your account has been created you will be returned to the login page. Please login with the email address and password you chose.

Step 3: Complete the online evaluation and then select the number of credits you are claiming from the dropdown list on the final screen. Click 'save and view certificate'. You will see your certificate displayed on screen. You may then print it. The database will store it for reprinting at a future date as required.

You can log in to: cfcme.org/cmelogin at any time to access your certificates, transcript and self-report other CE items to the 'My CE' Log. Etc.

Step 4: Please take the time to click on the 'Edit Profile' button after logging in and verify that all your information is correct (as well as change your password for future logins if desired).

It is important to note that your certificate type (Physician/Non-Physician) is dependent on the 'Professional Category' field. If you are seeing the wrong certificate type, switch your category. This will automatically update the certificate which you can view by clicking on the 'MyCME home' button to refresh the page and then click on the 'participation date' of the certificate that you wish to print/reprint.

Notes





NEW TO
SAGE

CALL FOR PAPERS

Journal for Vascular Ultrasound



The Journal for Vascular Ultrasound (JVU) is the official journal of the Society for Vascular Ultrasound. Published quarterly, JVU contains original research, scientific articles, case studies, book reviews, letters to the editor, CME tests and much more. JVU keeps you current with the latest technology and clinical practice of vascular ultrasound, providing you with essential information to apply in your practice and advance your career.

Why publish in the
Journal for Vascular Ultrasound?

To get ahead, you need to be known.
To get known, you need to get published.

Being published raises your career profile like nothing else!

Co-Editors:

Barton A. Bean, RVT, FSVU

Steven R. Talbot, RVT, FSVU

University of Utah Medical Center

Get Known. Get Published in JVU.

Published in Association with



- Rigorous peer review of your research or manuscript
- Prompt online publication expands your article's visibility, even before it appears in print
- Advanced metrics provide indicators of your article's online impact
- High visibility to maximize truly global exposure
- Ever-expanding subscriber base of your vascular ultrasound peers

Submit your manuscript today:
mc.manuscriptcentral.com/jvu

journals.sagepub.com/home/jvu

SAGE
Publishing

AVID symposium®

Advances in Vascular Imaging and Diagnosis

SAVE THE DATE!

Friday - Saturday, November 22-23, 2019

30th Symposium & Workshops on Management and Clinical Issues

Symposium Chair

George L. Berdejo, BA, RVT, FSVU

Natalie A. Marks, MD, RPVI, RVT

Symposium Co-Chair

Ann Marie Kupinski, PhD, RVT, FSVU

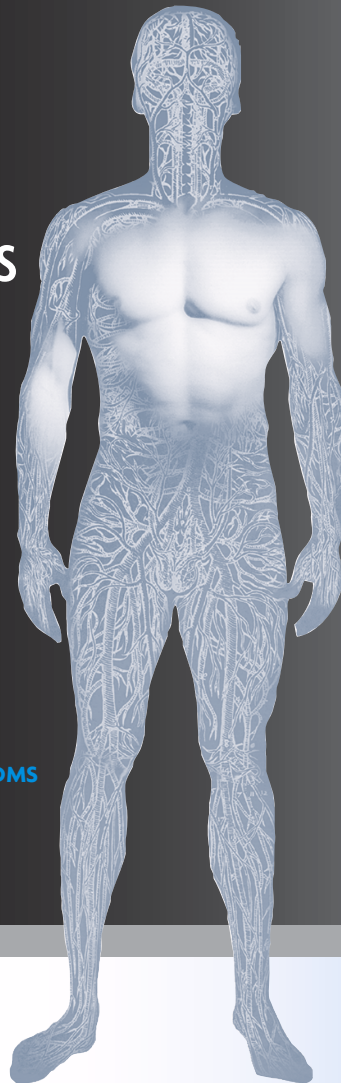
Nicos Labropoulos, BSc (Med), PhD, DIC, RVT

Laurence Needleman, MD

Frank J. Veith, MD

Honorary Chair

Anne M. Jones, RN, BSN, RVT, RDMS, FSVU, FSDMS



Sponsored by



Cleveland Clinic



Hilton

www.AVIDsymposium.org